

Understanding Maps

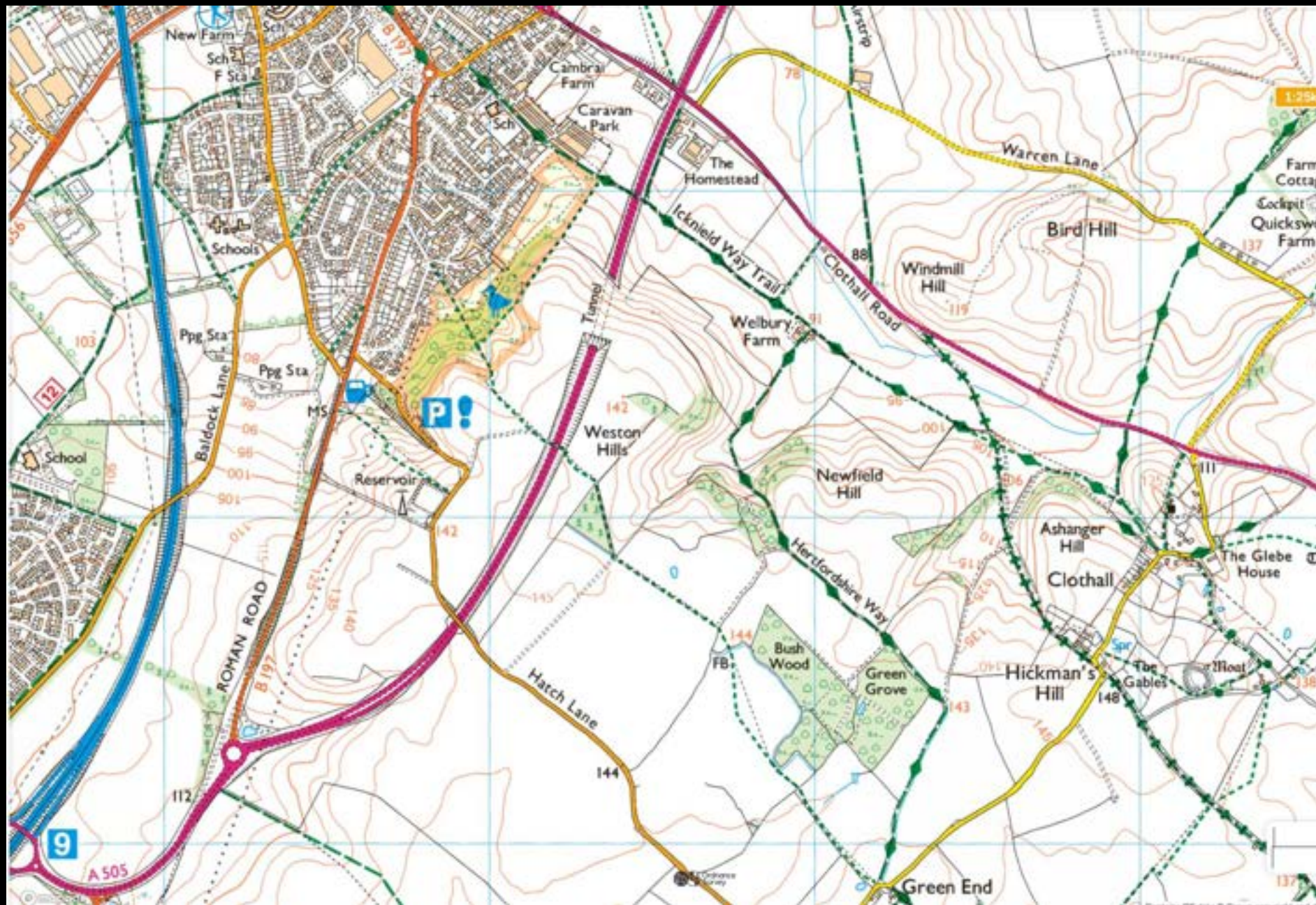
Purposes

What was a map made for?

What does the user want from it?

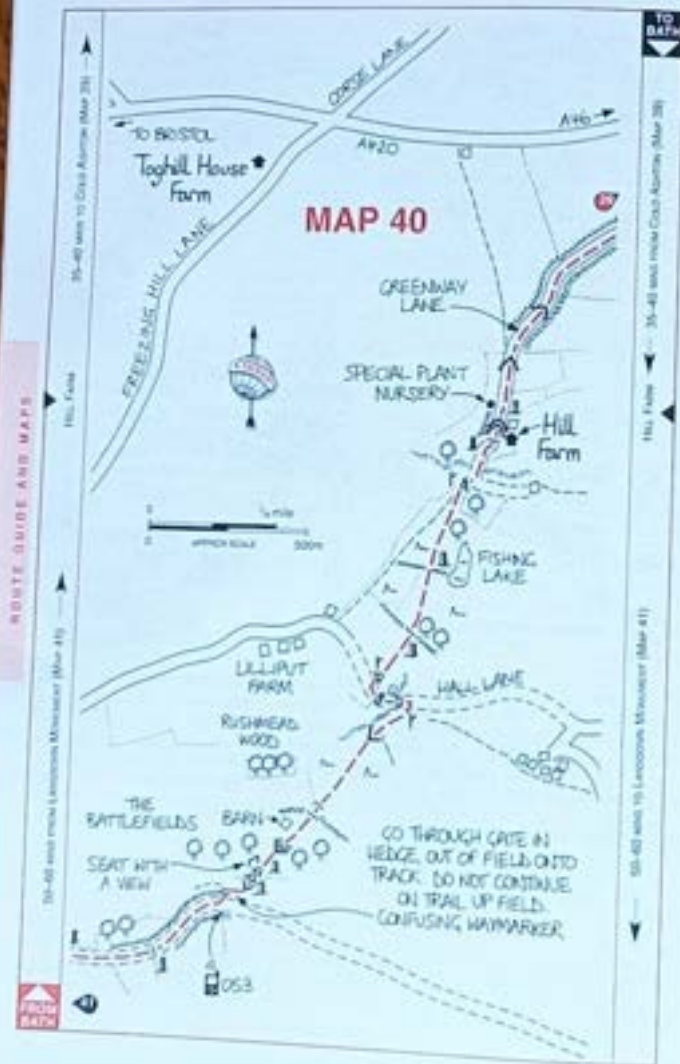
Walking Maps

A favourite:
OS 1:25000



Trailblazer
guide book

Maps are
1:20,000



BATTLE OF LANSDOWN

[Map 40 & Map 41]

If it were not for the signboards and the monument to Sir Brvil Grenville, the walker on the Cotswold Way might cross the field at the top of Freezing Hill (Map 41) without a second glance. Yet little has changed since the night of 5 July 1643 when the final stages of the Battle of Lansdown were played out between two almost equally matched armies of the Royalists and the Parliamentarians.

In command of the opposing forces were two friends of long standing: Sir William Waller in charge of the Parliamentarian defence of Bath against Sir Ralph Hopton leading a Royalist attack. It was a bloody affair, with 'legs and arms flying all over the place', during which the Royalist Grenville was mortally wounded, having led the Cornish infantry in the charge up Lansdown Hill. While the battle itself was indecisive, casualties were severe. The Parliamentarians withdrew under cover of darkness, and the Royalists were thwarted in their pursuit of capturing Bath and moving on to the richer prize of Bristol.

Wainwright
guide book
Maps
(at 1:30,000)
Pictorial views

High Raise 3

MAP



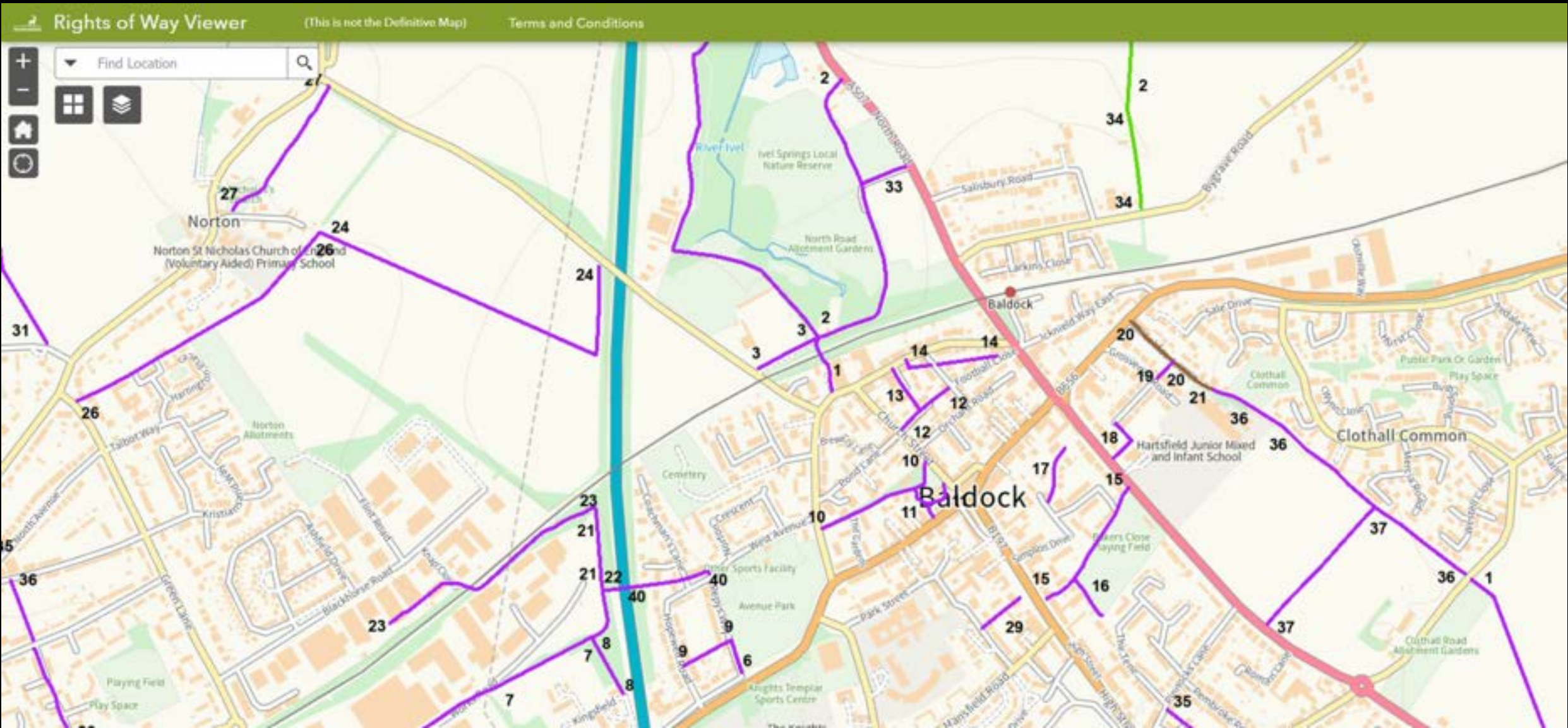
High Raise 4

ASCENT FROM DUNGEON GHYLL
2250 feet of ascent - 2½ miles from the New Hotel

looking north-west



The route illustrated is the only practicable direct way to High Raise from Dungeon Ghyll that does not involve the climbing of intermediate summits. It has much to commend it as a quick, easy and foolproof way to the top, for beyond Stickle Tarn the gradients are surprisingly gentle while the route is closely defined by Bright Beck, but it can hardly be described as interesting, and, if time and extra effort are of no consequence, the best way to High Raise from the south will always lie over the top of Harrison Stickle.



Legal: Definitive Map of Rights of Way

Street Maps



Site Plans



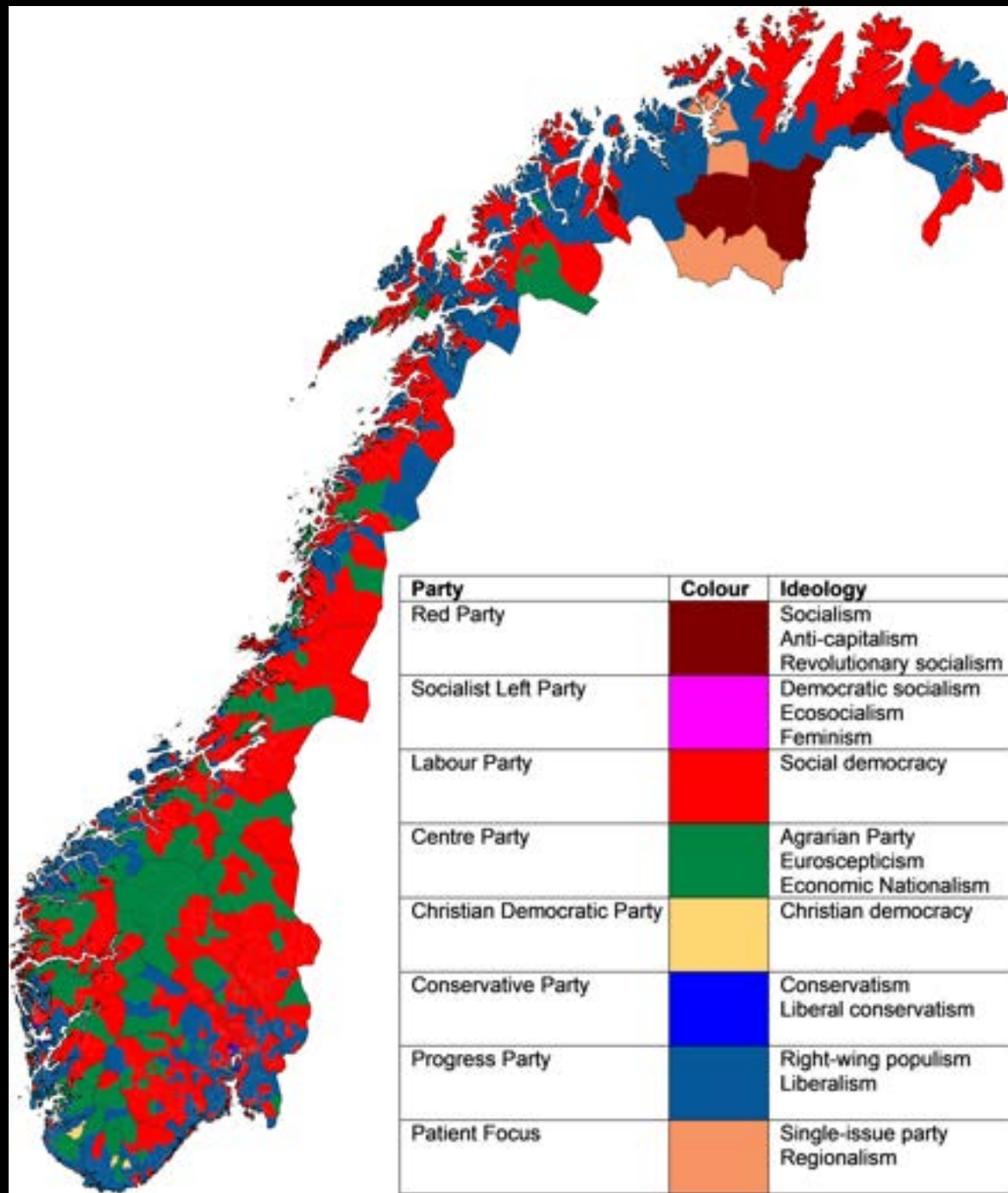
Political

European level

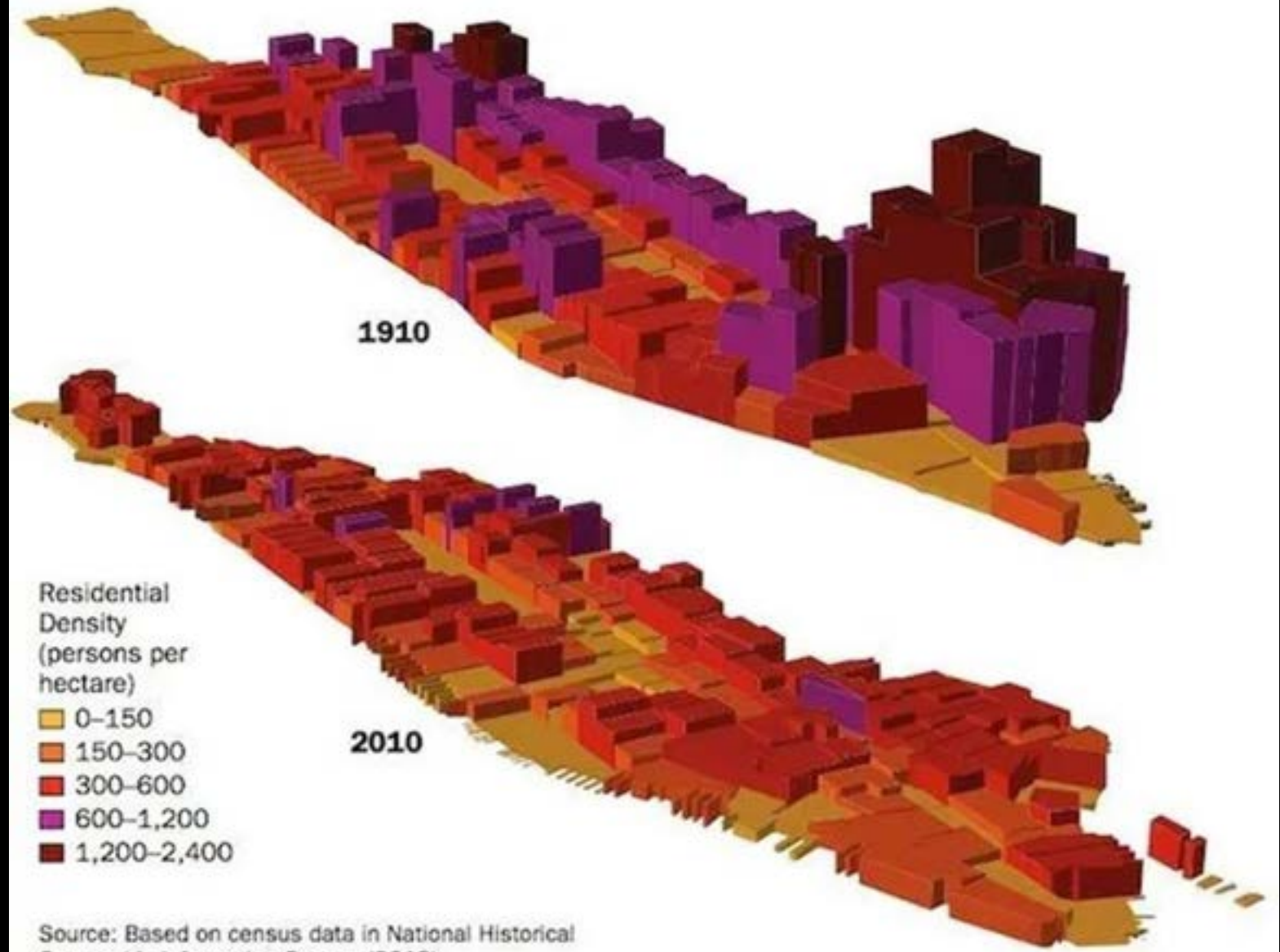


Political

Local level



The Decline of Census Tract Densities in Manhattan, New York City, 1910 and 2010

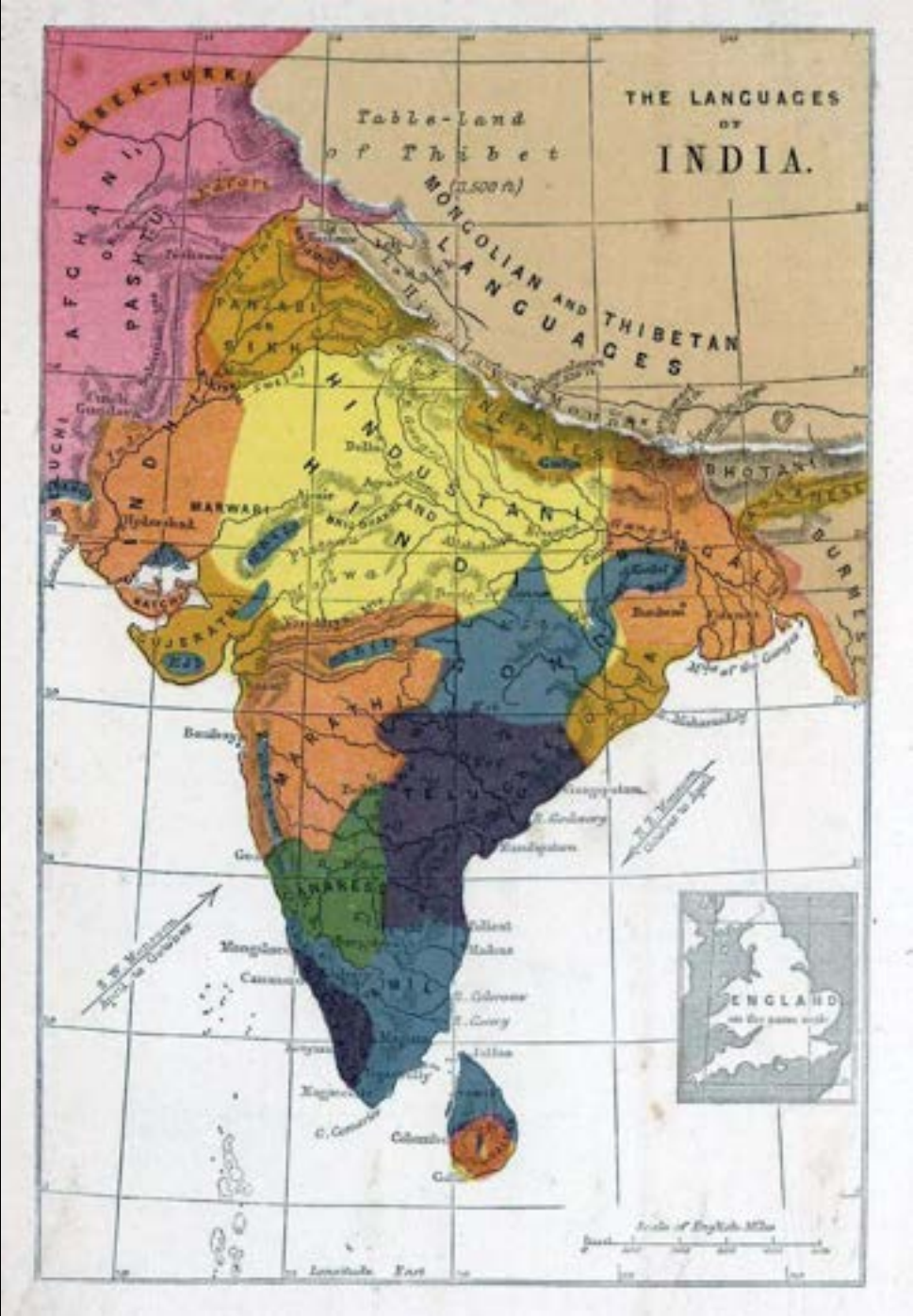


Population

Local & Historical

Historical

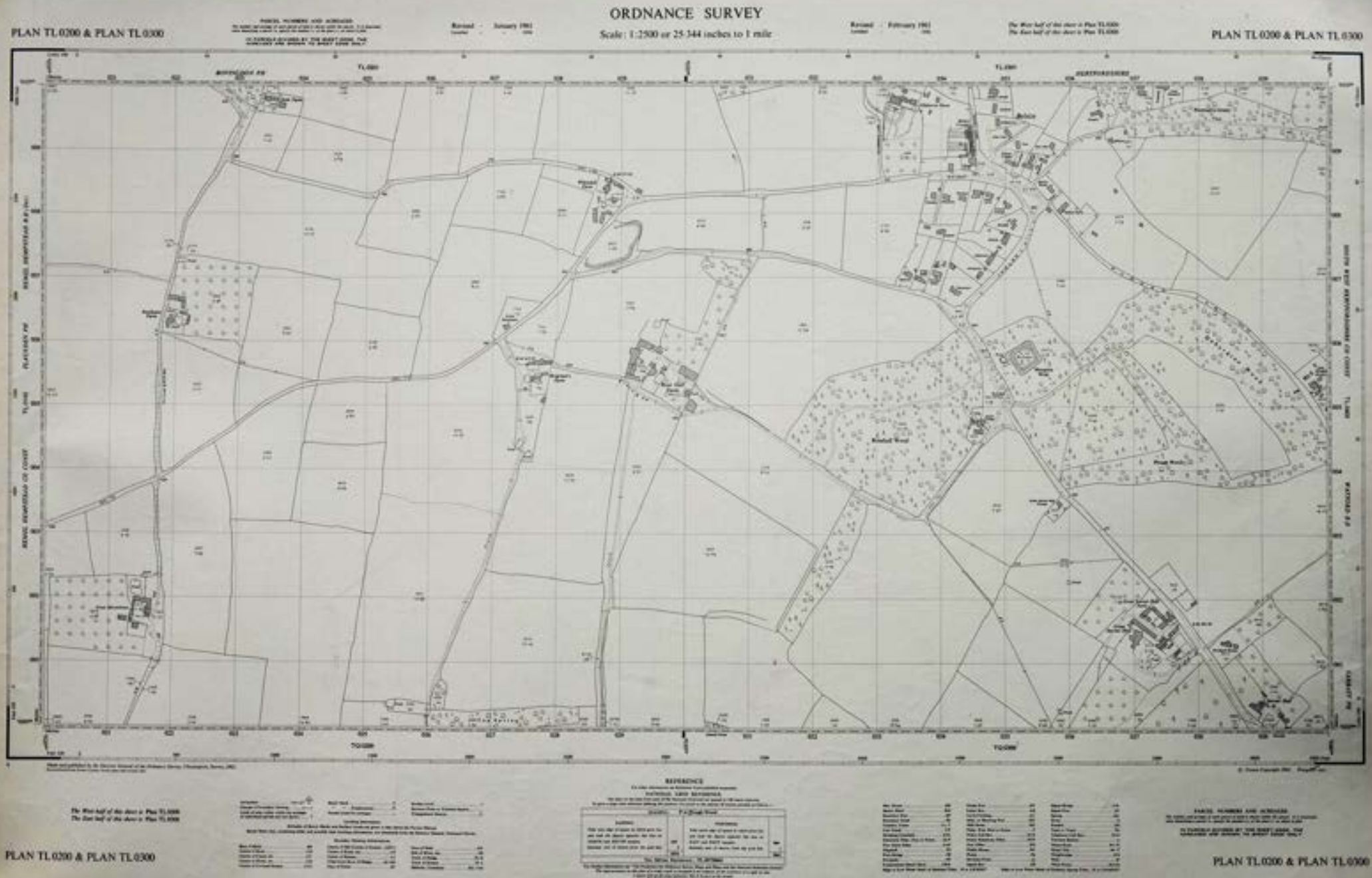
Indian languages 1862



Land
Ownership

Acreage
and owner
of each
field

1:2500
OS pub.
1962





OS Map c.1870

Identifies each parcel
of land, river, roads,
etc.

Other

Wildfires
August
2025

(Still from
video)



hair colours in human populations before European expansion

(les couleurs des cheveux chez les populations humaines avant l'expansion européenne)



Hair colour in indigenous populations

Treat as
works of
art



Or just a bit of fun:

What do you get if you cross the London Tube Map with a Wainwright guide to the Lake District?



Ring a bell?

